



Beechwood View, Leeds, LS4 2LP

£117 Per Person Per Week
Available from: 1st July 2022



www.sugarhouseproperties.co.uk

Property Details

Full Description

This end through terrace is located just around the corner from Burley Park Station and Co-Op, five minutes walk to the centre of Headingley or Hyde Park and only a few minutes from all of the local amenities of Cardigan Fields on Kirkstall Road.

Offering five double bedrooms, open dining kitchen, separate lounge and two bathrooms to avoid queues in the morning.

This house really is a home away from home!

Our Bills Packages as Standard;

This property comes with a luxury bills and service package; we'll set up everything up for you and you won't have to worry about a thing. We've also picked the very best suppliers; from superfast broadband, environmentally friendly energy suppliers and the NUS approved insurance provider, Endsleigh for contents insurance. Our bills included packages are designed to provide you with the best products whilst taking the hassle out of arranging and managing bills including all admin, readings and installations taken care of on your behalf.

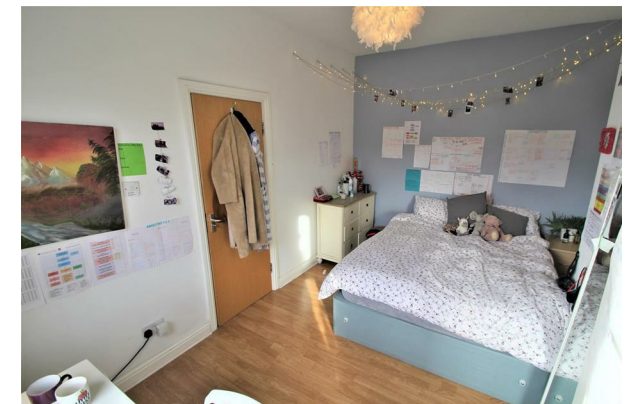
Some of the key points of our chosen suppliers;

- 100% Green Electricity
- 100% Carbon Neutral Gas
- Superfast 350mb Broadband (Business grade, with no download limits)
- £6,000 insurance contents cover per person
- TV License for communal areas of property
- Water supply from Yorkshire Water

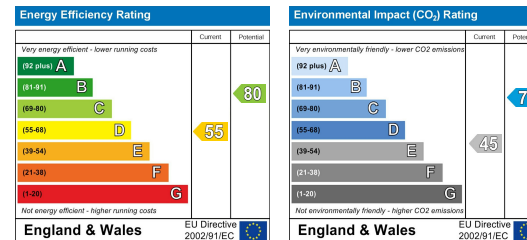
Please note our standard packages are available on almost all of our properties. Some individual properties may vary slightly. Any variations will be detailed during the application process.

Key Property Features

- Superfast Broadband & Green Energy
- Homely Decor
- Ideal Location For All Campuses
- Large Double Bedrooms
- Dining Area
- Dishwasher
- Tumble Dryer
- On Street Parking
- Close To Local Shops
- Council tax band B



Energy Efficiency Graph



Interested? Get in touch

Please contact us on 0113 8160131 or email lettings@sugarhouseproperties.co.uk if you wish to arrange a viewing appointment for this property or require further information.

These particulars, whilst believed to be accurate, are set out as a general outline for guidance only. If in the event, any error or omission made in these particulars, the Agent or Landlord cannot be held liable as this is brochure is for information only.

0113 816 0131

Sugarhouse (Leeds) Ltd
 Registration Number 7594132 VAT Number 252251053
 Registered Office 47 Headingley Lane, Headingley, Leeds LS6
 Place of Registration England and Wales

www.sugarhouseproperties.co.uk [/sugarhouseproperties](https://www.facebook.com/sugarhouseproperties) [@Sugarhouseleeds](https://www.instagram.com/Sugarhouseleeds)